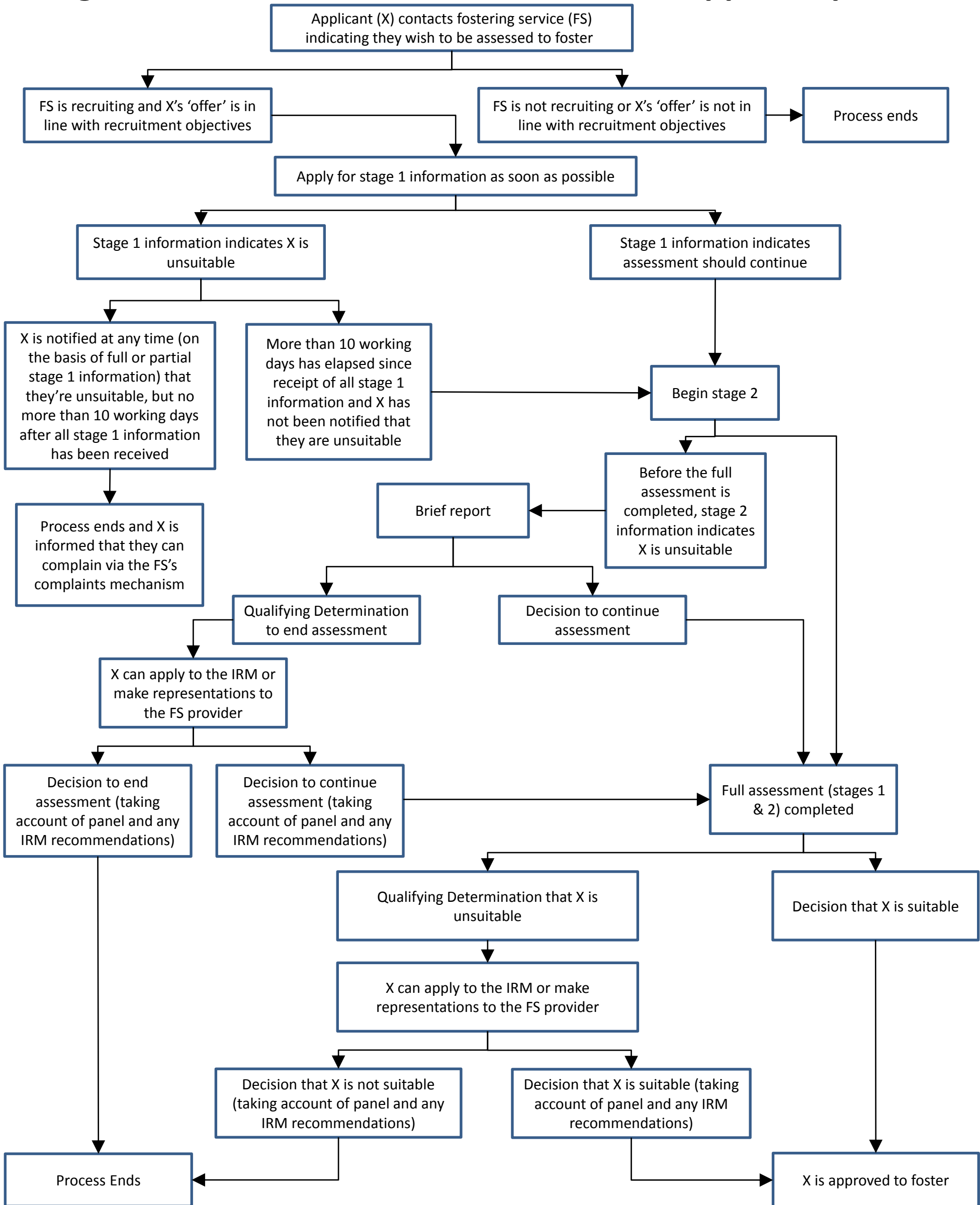


# Stages 1 and 2: Foster carer assessment & approval process



**NB - This diagram illustrates how stages 1 & 2 of the assessment process fit together. It is not intended to cover all actions a FS must undertake as part of the process - FSs must refer to the regulations and statutory guidance for this information. It should be noted that at any point in the process applicants (1) can withdraw, in which case the process ends; and (2) can complain to the FS (and must be informed of their right to do so if they are turned down in stage 1).**